

Figure 1. ^1H NMR of methyl salicylate in CDCl_3 .

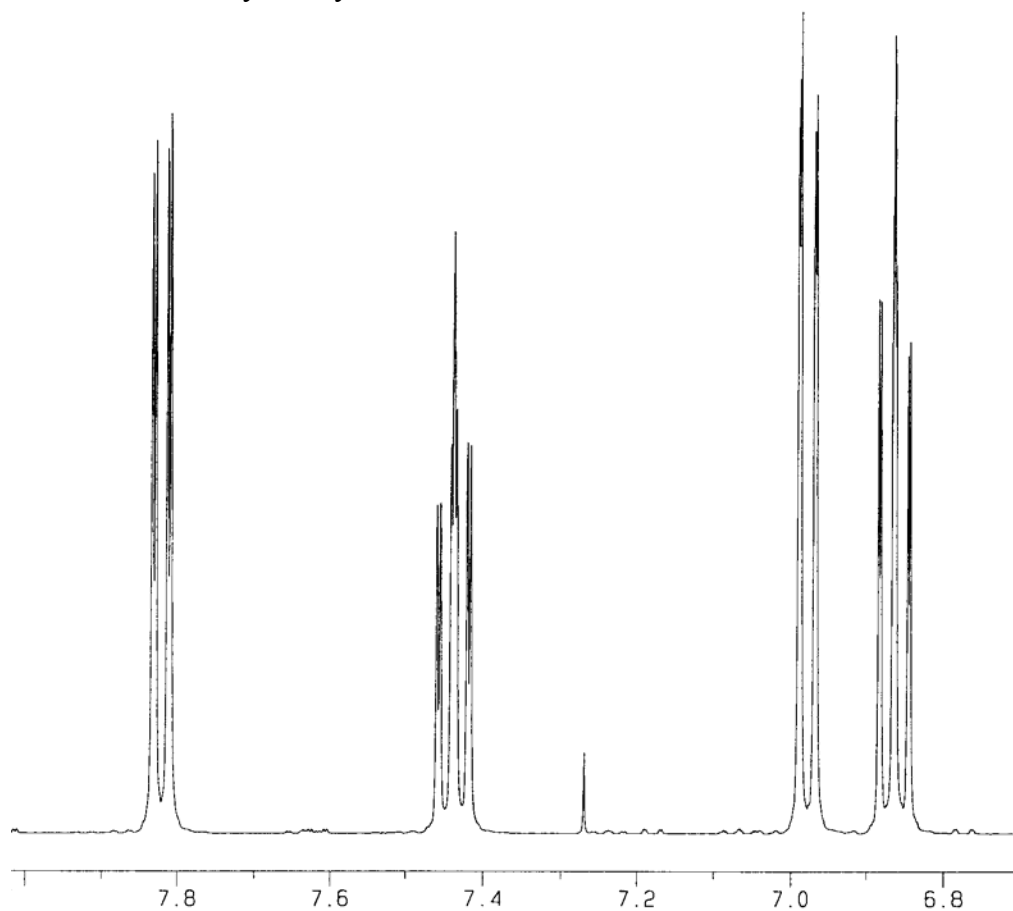


Figure 2. Expansion of the 6.5 – 8.0 ppm region of methyl salicylate's ^1H NMR spectrum (Fig. 1). The small peak near 7.29 ppm is from residual CHCl_3 in the sample.

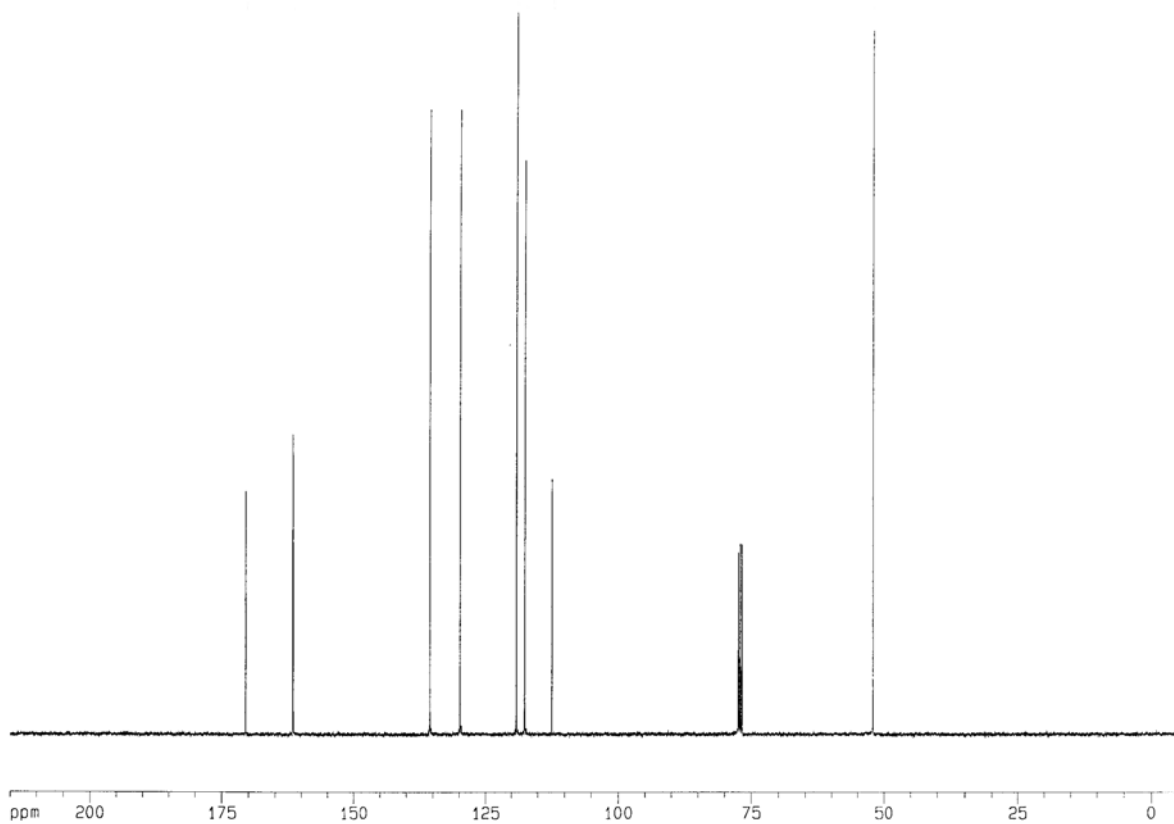


Figure 3. ^{13}C NMR spectrum of methyl salicylate in CDCl_3 . The multiplet near 77 ppm arises from residual CHCl_3 .